

Welcome to  
“What to Expect When  
Expecting a Sixth Grader”



**Please sign in on the back counter! Thanks!!**

# AGENDA

- Welcome
- Communication
- Edline
- Schedule/Dress Code
- Expectations
- FSA
- Science Fair
- Q & A (Post It Notes!)



# Communication

- Please e-mail or call with any questions or concerns.
- Your child will write in his/her planner every day.
  - Includes homework and any messages that we might need to share with you.

Information can be found on all  
Class websites.

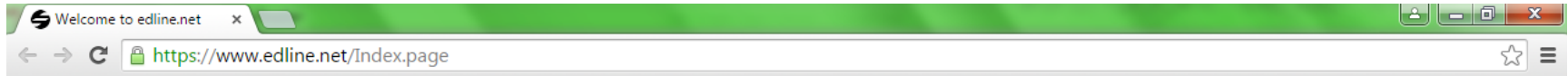


# Communication

- The school newsletter is electronic and will be emailed to you.
- We will communicate with you through email, Edline, and student planners.



# Edline



## Have an Account?

Sign in to your account below.

SCREEN NAME

FORGOT SCREEN NAME?

PASSWORD

FORGOT PASSWORD?

SIGN IN



## Sign Up

If you have a new activation code, **Sign Up** here.

[HELP](#) | [COMPANY INFORMATION](#) | [PRIVACY POLICY & TERMS OF USE](#)

Edline is a Blackboard product.



System tray icons including network, volume, and power, along with the time and date: 1:43 PM 8/20/2015.



# Lunch Schedule

Lunch times for students may vary slightly due to a changing rotation schedule and which teacher your child will be with at lunchtime.

Acosta 11:02-11:30

Elliott 11:00-11:28

Zgonc 10:56-11:24

# Dress Code



We will be adhering to Brevard County's School Board Policy. Please refer to the district's guidelines concerning proper attire. **Sneakers must be worn daily for PE and Supplemental PE. (Every day but Wednesday!)**

# Grading Scale



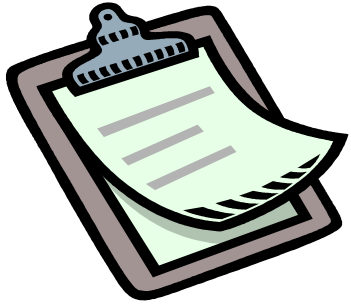
90-100 A

89-80 B

79-70 C

69-60 D

59-0 F



# Clipboard and Weekly Folder

**The following are the criteria for the week:**

<b>O</b>	Outstanding	No mini marks for the week!
<b>S</b>	Satisfactory	1-2 mini marks for the week.
<b>N</b>	Needs Improvement	3-5 mini marks for the week.
<b>U</b>	Unsatisfactory	6+ mini marks for the week.

**The total amount of mini marks earned during the nine weeks will play a part in determining their conduct grades for their report cards.**

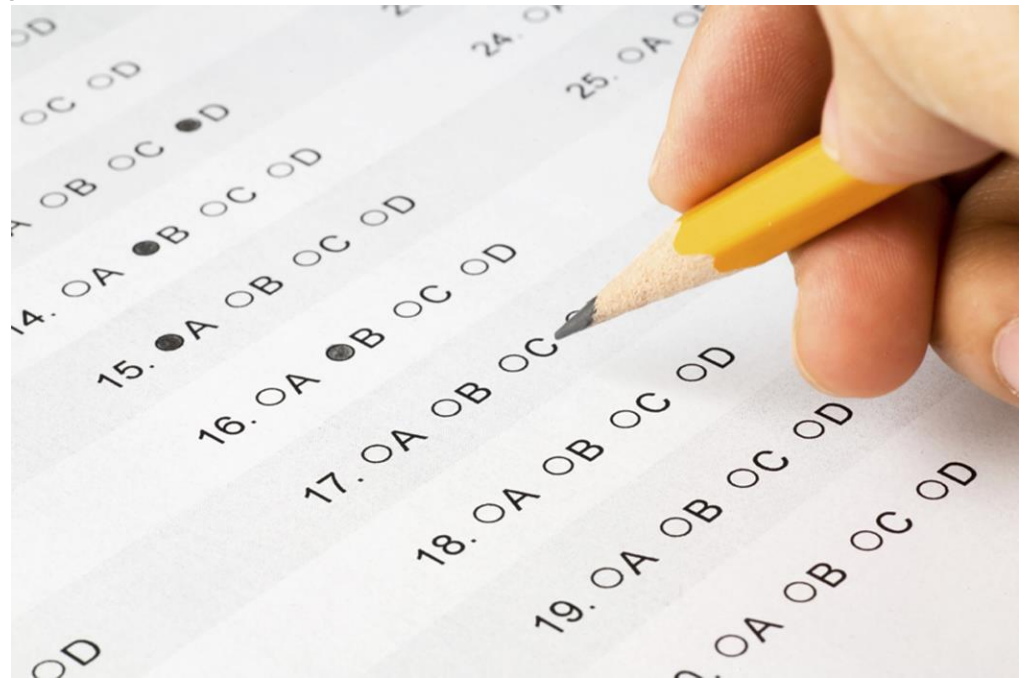
# FSA: Florida Standards Assessment

- Please note the testing windows:

FSA Writing: 2/27-3/3

FSA Reading: 4/10-5/5

FSA Math: 4/10-5/5





# Science Fair

- All logs must be handwritten in ink, by student.
- No 3D objects on board. Pictures only.
- All measurements must be in metric units.
- Log should detail daily happenings of project.
- For example: “Today I selected my science fair project. I am going to learn about...”
- Timeline will be distributed next week and also posted on Mr. Acosta’s website.

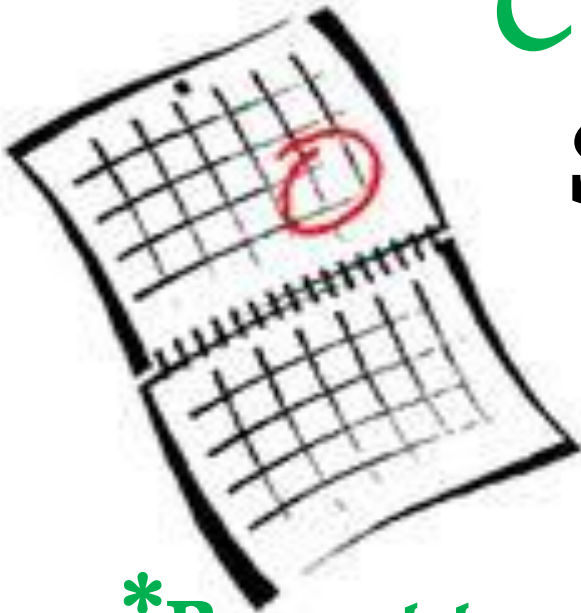


# Mark your Calendars

## Curriculum Night

September 15<sup>th</sup>

5:30~6:30PM



**\*Report to your homeroom teacher's class.\***